

Translation



# User Manual CNC Wireless Keypad

Article: 400210

[www.cnc-router.com](http://www.cnc-router.com)



Status: 09.12.2015

## CNC Wireless Keypad



### Short description

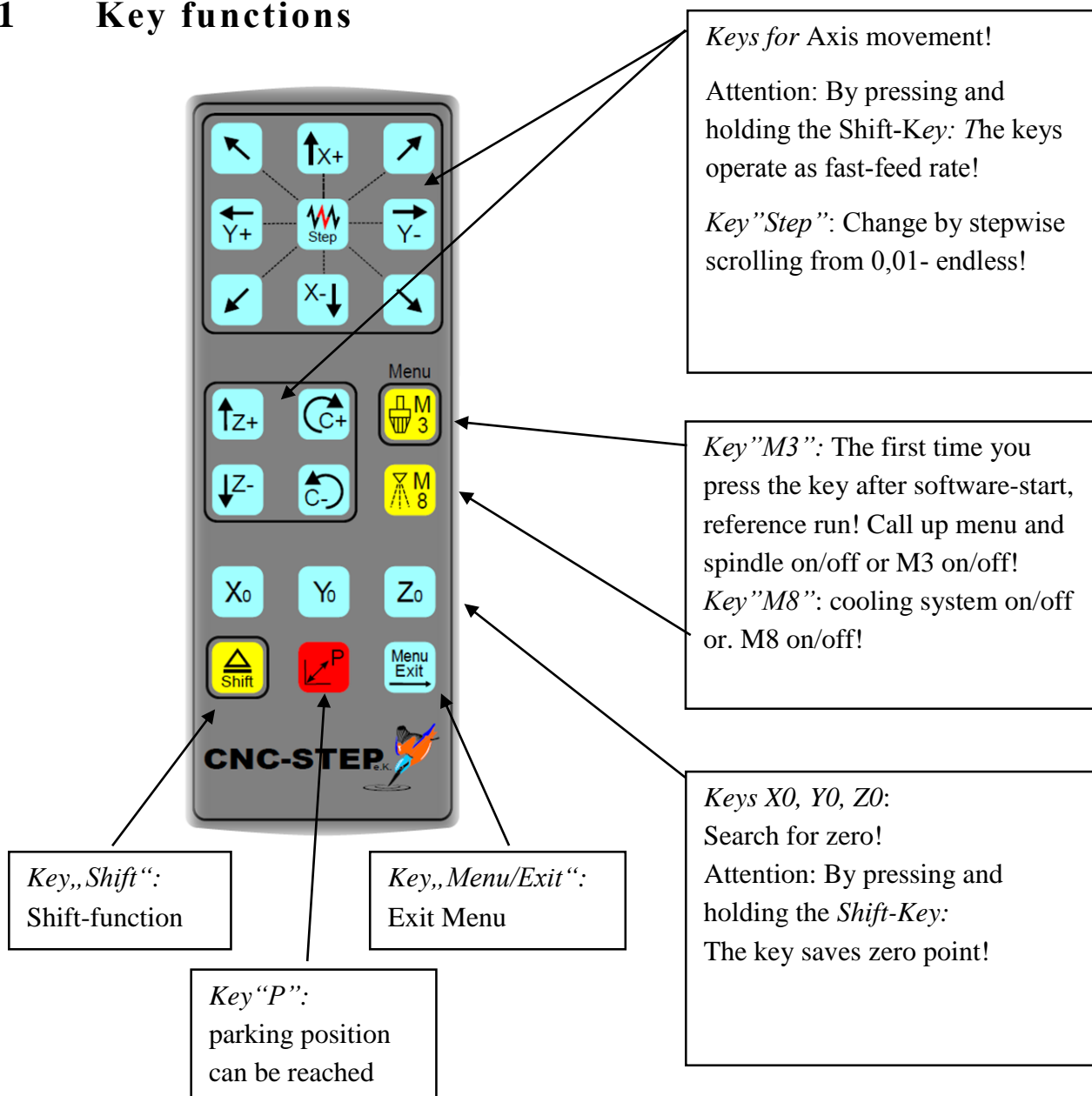
The remote control is capable of operating all CNC-controlled machines, with their basic functions, that are driven by the different types of CAM Software WINPC NC provided by Lewetz , via remote control. A remote control is in comparison to the start-up of zero points on work pieces using a conventional Keyboard, much easier!

It can be used with any CAM Software which is capable to individually customize the key assignment via Hotkeys.

## CONTENTS

1	Key functions .....	4
2	Activation and Installation .....	5
2.1	Activating the keypad .....	5
2.2	Installation of the dongle .....	5
2.3	Compatibility of the operating system.....	5
2.4	Keyboard Layouts.....	5
2.5	Important!!! .....	5
3	Activating the keypad in WinPC-NC.....	6
4	Possible errors CNC wireless keypads:.....	7
5	Scope of delivery.....	8
6	Customer Service .....	9

# 1 Key functions



The keypad was designed in the standard layout of the coordinates (X top, bottom and Y to the right, left). It is possible that the coordinates-field is displayed differently in various software versions such as in WinPC-NC (Keypad orientation 1) or has to be set separately.

Please note this, otherwise the operation of your keypad won't match the representation of the key functions.

## **2 Activation and Installation**

### **2.1 Activating the keypad**

- Pick up the remote control and turn it over, so you can see the cover of the battery compartment.
- Loosen the cover by removing both cross-head screws using a Phillips screwdriver.
- Remove battery-contact breaker by holding it carefully on the arrow symbol with thumb and index finger, then pull slowly. Pulling to fast could unintentional throw off the battery.
- Now close the battery compartment by using the screws.
- Your remote-control is now activated and has to be connected with your PC via dongle.

### **2.2 Installation of the dongle**

- Place your dongle in a free USB-port on your computer where you have installed your CNC software.
- The dongle should now automatically install within seconds including all needed drivers.
- Should your computer fail to do so, please install the driver manually in the device manager.
- After the installation process has been successfully completed, you keypad is ready for use.

### **2.3 Compatibility of the operating system**

- The keypad is Windows XP, Windows Vista, Windows 7 und Windows 8 compatible!

### **2.4 Keyboard Layouts**

- WinPC-NC supported the German- and US-Keyboard-Layouts.  
Please note the information concerning the US-Layout in the chapter 3.

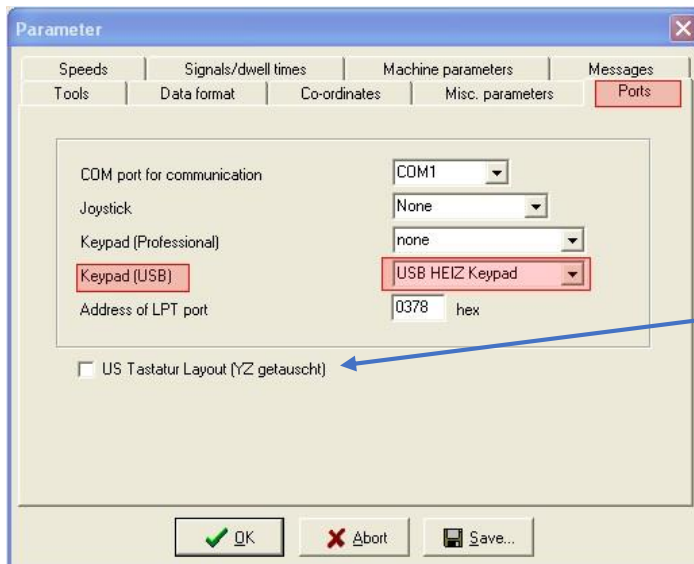
### **2.5 Important!!!**

- Make sure that the connection between keypad and PC is never lost while pressing keys. Never unplug the dongle at the same time while pressing a key on the keypad. It is possible, that the function, you have pressed in this moment, repeats endlessly until the connection is reestablished, or you stop it manually via mouse in the software!!!

### 3 Activating the keypad in WinPC-NC

To be able to use the full functionality of the remote control, please install the latest version of WinPC-NC. This is the only way to ensure, that the remote is pre-programmed and selectable.

The remote control can now be activated in WinPC-NC:



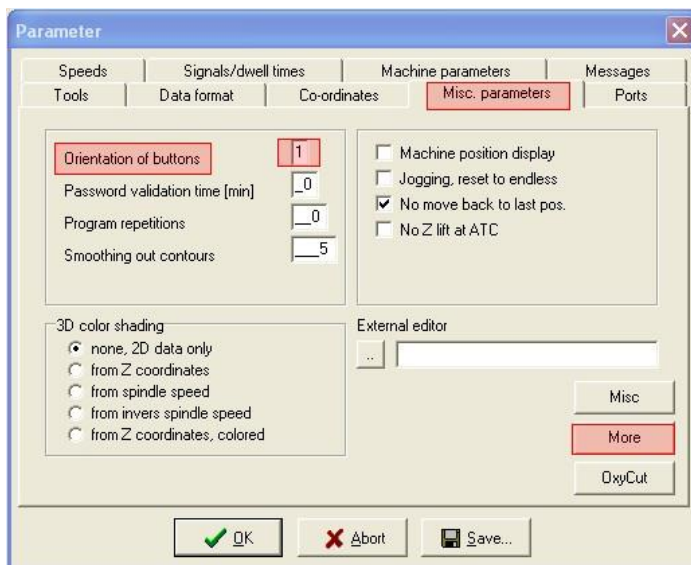
**Attention:**

In a keyboard with US-layout, the Y- and Z-keys are reversed.

If you want to use this keyboard-layout, you must set up it into the software.

Otherwise the Z-axis moves, when you want to move the Y-axis!

WinPC-NC - Parameter / Ports



Please set “Orientation of buttons” on “1”.

WinPC-NC - Parameter / Misc / More

## 4 Possible errors CNC wireless keypads:

Ensure that the numeric keypad of the used processor unit (including laptops without existing numeric keypad) is activated before usage.

If this is not the case, this could lead to a signal-error and cause faulty performance of the remote control.

Possible settings or computer remedy (PCs) could be:

Activate the numeric keypad via Bios, if this is admitted (administration skills necessary)! The issue in BIOS is called: ***“Boot up NumLock”***.

Or a Laptop or keyboard for example, has the possibility to activate the control-keys **FN and NUM**. Using regular keyboards please activate the key in the numeric keypad **NUM** and then install FB.

- The third possible way would be by using Reg Edit on the operating system:  
Start the registration-editor by pressing [Windows-button]+[R] and enter ***“regedit”***.
- In the registration-editor, please switch into following folder:  
***“HKEY\_CURRENT\_USER\Control Panel\Keyboard”***
- Please double-click in the right half window on ***“InitialKeyboardIndicators”***.
- Please enter the value ***“2”*** in following window, and close the registration-editor.

That's it! The NUM-function of the numeric keypad is now automatically activated for the next start. If you want to deactivate this function permanently, please use value ***“0”***.

By using other values you can also set start-combinations from different special keys.

Following values are possible:

**0 – deactivate all functions**

**1 – activate Caps Lock**

**2 – activate NUM**

**3 – activate Caps Lock and NUM**

**4 – activate Scroll**

**5 – activate Caps Lock and Scroll**

**6 – activate NUM and Scroll**

**7 – activate all functions**

## **5 Scope of delivery**

- 1x keypad/remote control
- 1x USB dongle
- 1x brief instruction keypad/remote control
- 2x Mignon 2xAA (already in keypad/remote control)



## 6 Customer Service

For technical information, please contact our Technical Customer Service:

Address:	CNC-STEP e.K. Siemensstraße 13-15 D-47608 Geldern	
Phone:	+49 (0)2831/91021-50	(Mo. - Fr. 07.00 - 15.00 Uhr)
Mobile:	+49 172 7272781 Only in urgent cases	(Mo. - Do. 15.30 - 18.00 Uhr)
Fax:	+49 (0)2831/91021-99	
E-Mail:	support@cnc-step.de	
Web:	<i><a href="http://www.cnc-router.com">www.cnc-router.com</a></i>	

If you have questions, please contact our customer service via e-mail or phone.  
We advise you gladly.

Numerous suggestions and information can be found on our website:

***[www.cnc-router.com](http://www.cnc-router.com)***